

Classification	NAPOPC_CE5 FAQ				No.	1-007-E	
Author	James	Version	1.0.0	Date	2010/7/12	Page	1/4

How to use ZigBee modules in NAPOPC_CE5?

Applies to:

Platform	OS version	NAPOPC version
WinPAC/ViewPAC	CE5	NAPOPC_CE5 v2.20

Assume that we now have a group of Zigbee modules:

ZB-2550 (Host Converter)

ZB-2052 (DI)

ZB-2060 (DIO)

If we can connect NAPOPC_CE5 to ZB-2550, then we can exchange data with ZB-2052 / ZB-2060 further.

We have two ways to establish communication:

Search (Automatic) / Add device (Manual)

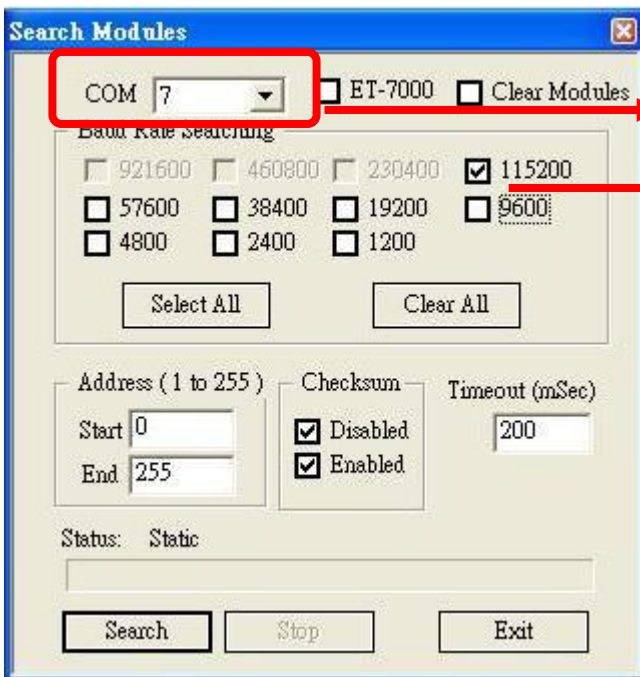
Search (Automatic)

Step 1



Click "**Search**" on the Toolbar to scan modules connected with your PC. It will show you the dialog as below. After setting up, just click "search".

Classification	NAPOPC_CE5 FAQ				No.	1-007-E	
Author	James	Version	1.0.0	Date	2010/7/12	Page	2/4

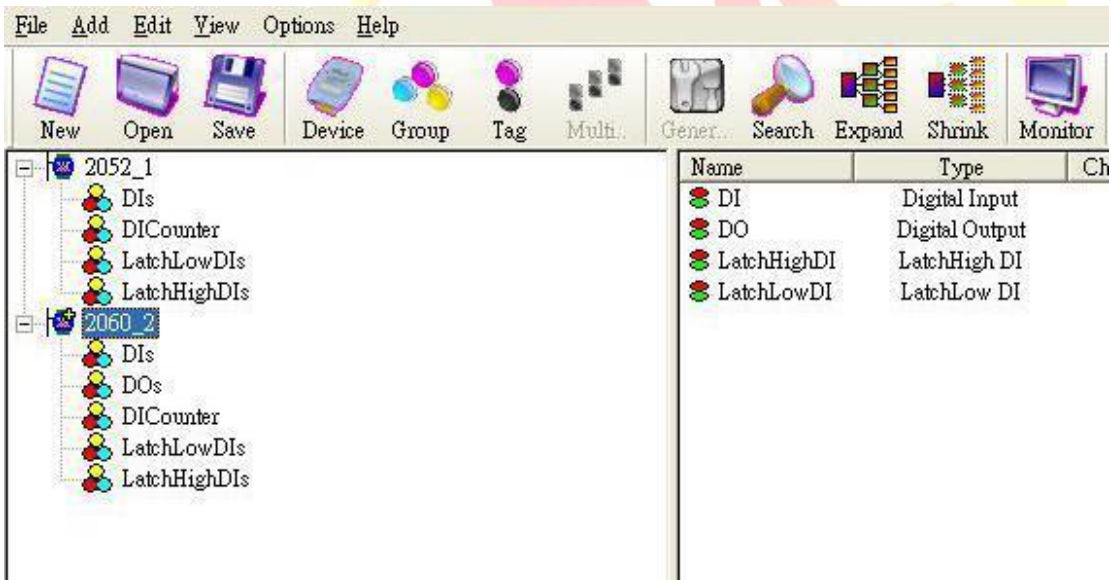


COM port connected with ZB-2550

Baud rate between PC and ZB-2550

Step 2

After searching, NAPOPC_CE5 is able to communicate with ZB-2052 and ZB-2060.



Classification	NAPOPC_CE5 FAQ				No.	1-007-E	
Author	James	Version	1.0.0	Date	2010/7/12	Page	3/4

Add device (Manual) (DCON)

Step 1



Click "Device" on the Toolbar, it will show you the dialog as below. Check the options which are marked, then click "OK" to add device.

The screenshot shows the 'Select Device' dialog box with several annotations in yellow callout boxes:

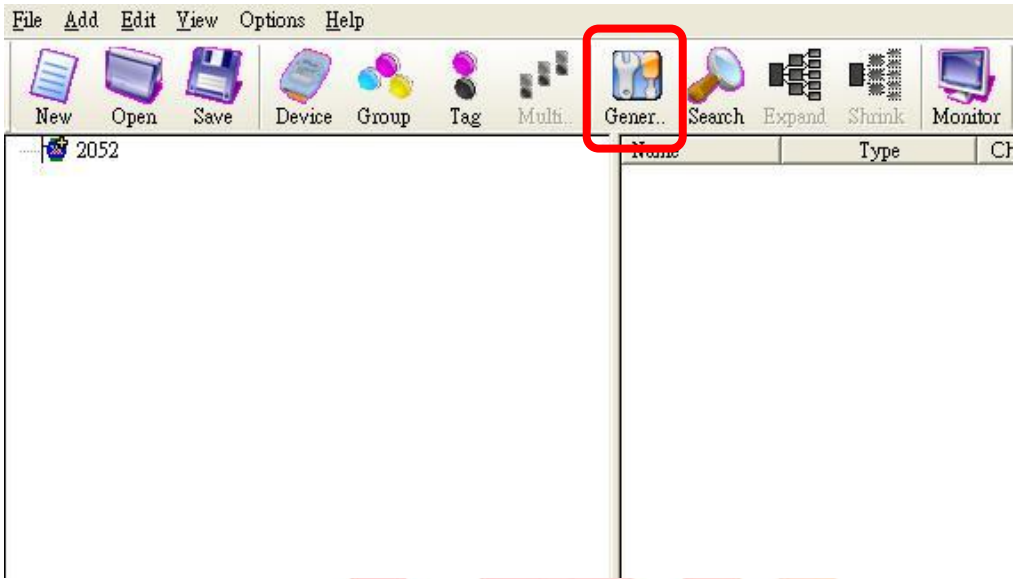
- Protocol between WinPAC/ViewPAC and ZB-2550:** Points to the 'DCON' radio button, which is also highlighted with a red box.
- Module name:** Points to the 'ZB-2K' dropdown menu in the 'Module Setting' section, which is highlighted with a red box.
- Address of ZB-2550:** Points to the 'Address' input field containing the value '1', which is highlighted with a red box.
- COM port connected with ZB-2550 Baud rate between PC and ZB-2550:** Points to the 'COM' dropdown menu (set to '7') and the 'Baud Rate' dropdown menu (set to '115200') in the 'COM Port Setting' section, both highlighted with a red box.

Other visible details in the dialog include: 'Device Name' set to '2052', 'I-7K/I-8K/I-87K/ZB-2K I/O Module' selected, 'Remote' selected in 'Module Setting', 'Address' range '0-255', 'Slot' '0', 'Checksum' 'Disable', 'COM Port Setting' with 'Parity' 'None', 'Data Bits' '8', and 'Stop Bits' '1', 'RPC' selected, 'Controller Setting' with 'IP Address' '192.168...', 'Simulate I/O' unchecked, and 'Pending Time' '1000 ms'. 'OK' and 'Cancel' buttons are at the bottom.

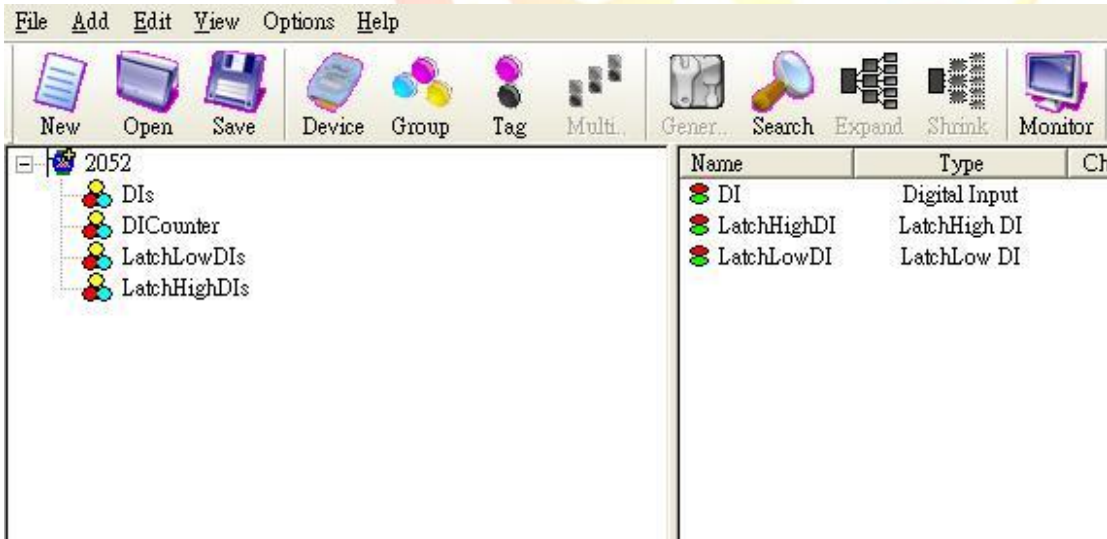
Classification	NAPOPC_CE5 FAQ				No.	1-007-E	
Author	James	Version	1.0.0	Date	2010/7/12	Page	4/4

Step 2

ZB-2052 is added :



Click "Generate Tag" on the Toolbar, it will add all tags for you according to ZB-2052 specification.



Step 3

Use the same procedure to establish ZB-2060. And then NAPOPC_CE5 will be able to communicate with ZB-2052 and ZB-2060.